

CIVIL AIRNAV MANUAL

(The Terminal Procedure and Instrument Flight Rules)

GENERAL DESCRIPTION

INDOAVIS AIRNAV MANUAL are published in seven hole of loose leaf or perfect bound two volumes covering the Conterminous Indonesia, Malaysia, Singapore, Timor. A Change Notice is published at the midpoint between revisions in bound volume format and is available on the internet for free download Aeronautical information at the INDOAVIS web site (<http://www.indoavis.co.id>).

COVERAGE AREAS

INDONESIA (56 Airport) : AMBON, BALIKPAPAN, BANDA ACEH, BANDAR LAMPUNG, BANDUNG, BANJARMASIN, BATAM, BENGKULU, BERAU, BIAK, BIMA, CENGKARENG, DENPASAR, ENDE, GORONTALO, JAKARTA, JAMBI, JAYAPURA, KENDARI, KETAPANG, KUPANG, MAKASSAR, MANADO, MANOKWARI, MATARAM, MAUMERE, MEDAN, MERAUKE, NABIRE, PADANG, PARIAMAN, PALANGKARAYA, PALEMBANG, PALU, PANGKAL PINANG, PANGKALAN BUN, SAMPIT, PEKANBARU, PONTIANAK, RENGAT, SAMARINDA, SEMARANG, SOLO, SINGKEP, SORONG, SURABAYA, TAMBOLAKA, TANGGERANG, TANJUNG - PANDAN, TANJUNG, PINANG, TARAKAN, TERNATE, TIMIKA, UTAROM, WAINGAPU, WAMENA, YOGYAKARTA

MALAYSIA (6) : KERTEH, SEPANG, KUCHING, PENANG, IPOH, JOHOR BAHRU

SINGAPORE (2) : CHANGI, SELETAR

AUSTRALIA (1) : DARWIN

PHILIPPINES (1) : DAVAO

TIMOR LESTE (1) : DILI

PAPUA NEW GUINEA (1) : VANIMO



INFORMATION INCLUDING :

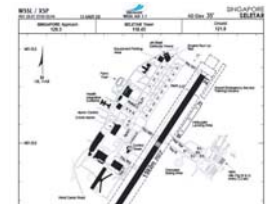
- I. INTRODUCTION
- II. GENERAL
- III. RULES AND REGULATION
- IV. ICAO RECOMMENDED
- V. TERMINAL NAVIGATION CHART
 1. Aerodrome Chart
 2. Standard Instrument Departure Chart
 3. Standard Instrument Arrival Chart
 4. Instrument Approach Chart
 5. Terminal Area Chart
 6. IFR En-route H/L Alt Chart (INA1 and INA2)



IFR High/Low Altitude En-route Chart (INA1 and INA2)



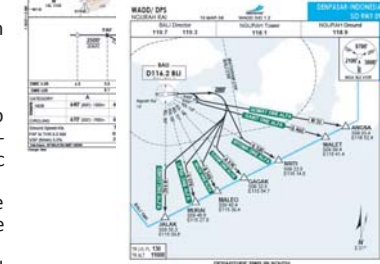
Aerodrome Chart



Approach Chart NDB



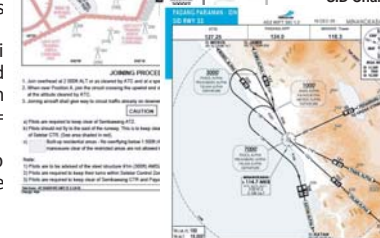
SID Chart



Visual Approach Chart



SID Chart



PRICE

Note : Additional airport not listed above is also available, Please contact us for further information

ORDER CODE / Set	PRODUCTS NAME	PRICE		REMARK
		Initial + One year Revision services	Annual Revision services	
IFR ANM	2 Book AIRNAV (Air Navigation Manual)	USD \$ 735,- (Rp. 6.600.000,-)	USD \$ 540,- (Rp. 4.850.000,-)	Excluding VAT

Note : Outsite Jakarta and International add price (USD 50,-)

MEMBER SERVICES

Indoavis provide services based on AIRAC date (every 28 days) in a month. The changes are related to all products excluding IFR-En-Route Chart. Changes in data and information adopted by each country Indoavis based AIP Ammendment AIP, the AIP Supplement and NOTAM Permanent. To obtain such information members can quickly view and download on the web (<http://www.Indoavis.co.id>)

Indoavis Services include : Data changes on each sheet of information, Change the sheet delivery to destination (Free Jakarta), Provides replacement of damaged sheets.

CHART INTRODUCTIONS

- 1) **Instrument Approach Procedure (IAP) Charts.** IAP charts portray the aeronautical data that is required to execute instrument approaches to airports. Each chart depicts the IAP, all related navigation data, communications information, and an airport sketch. Each procedure is designated for use with a specific electronic navigational aid, such as ILS, VOR, NDB, RNAV, etc.
- 2) **Standard Instrument Departure Procedure (SID) Charts.** SID charts are designed to expedite clearance delivery and to facilitate transition between takeoff and en route operations. They furnish pilots' departure routing clearance information in graphic and textual.
- 3) **Standard Instrument Terminal Arrival (STAR) Charts.** STAR charts are designed to expedite ATC arrival procedures and to facilitate transition between en route and instrument approach operations. They depict preplanned IFR ATC arrival procedures in graphic and textual form. Each STAR procedure is presented as a separate chart and may serve either a single airport or more than one airport in a given geographic area.
- 4) **Aerodrome (AD) Chart.** Full page airport diagrams are designed to assist in the movement of ground traffic at locations with complex runway/taxiway configurations and provide information for updating geodetic position navigational systems aboard aircraft.
- 5) **Terminal Area Chart (TMA).** This is a chart the VFR Terminal Area Chart. Information shown includes airports of entry 25Nm MSC (Minimum Safe/Sector Altitude) from airport, Navaids with the minimum obstacle clearance
- 6) **Area Chart.** This chart is selected ANC charts. The coverage is the same as the associated ANC. Flyway planning charts depict flight paths and altitudes recommended for use to bypass high traffic areas. Ground references are provided as a guide for visual orientation. Flyway planning charts are designed for use in conjunction with ANCs and sectional charts and are not to be used for navigation. Chart scale 1 inch = 3.43nm/1:250,000.
- 7) **IFR Enroute High and Low Altitude Charts** (Conterminous Indonesia, Malaysia, Singapore, Brunei Darussalam and Timor leste). Enroute high and low altitude charts are designed for navigation at or below and above 13,000 feet MSL. This four-color chart series includes the jet route structure; VHF NAVAIDS with frequency, identification, channel, geographic coordinates; selected airports; reporting points. Scales 1 inch = 45nm. Revised every 162 days
- 8) **Obstacle Limitation Surface Charts** (Obstacle Limitation Surface (OLS). A surface that establishes the limit to which objects may project into the airspace associated with an aerodrome so that aircraft operations at the aerodrome may be conducted safely. Obstacle limitation surfaces consist of the following



PT. INDOAVIS NUSANTARA

Geo-Informatics and Aeronautical Navigation Support

2nd Floor Terminal Building A-02/PK
 Halim Perdana Kusuma Int'l Airport Jakarta 13610, INDONESIA
 Ph : 62-21 808 80028 - 62.21 912 60023
 Fax : 62-21 809 7242
 e-mail : info@indoavis.co.id
<http://www.indoavis.co.id>